

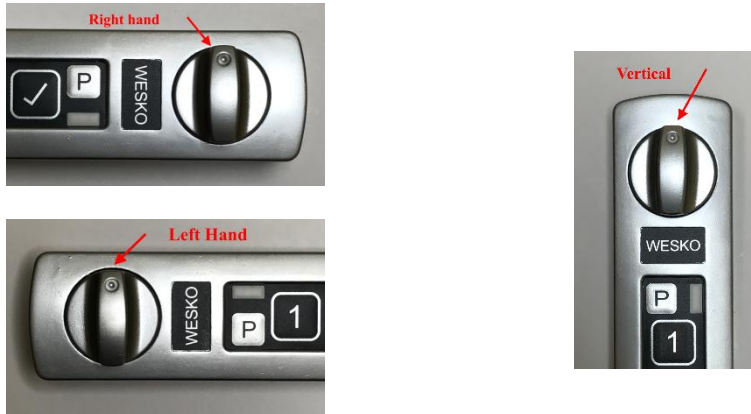
eLock Installation Instruction

Surface Mount eLock



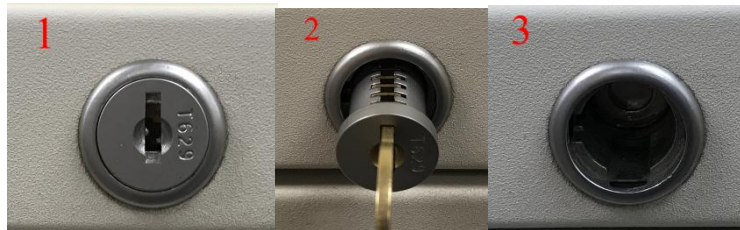
Before installation:

- Confirm the electronic lock is unlocked by rotating the knob 360° all the way around. If not, use admin passcode to unlock it. The knob should be in the 12 o'clock position as indicated by the small dimple on the knob.

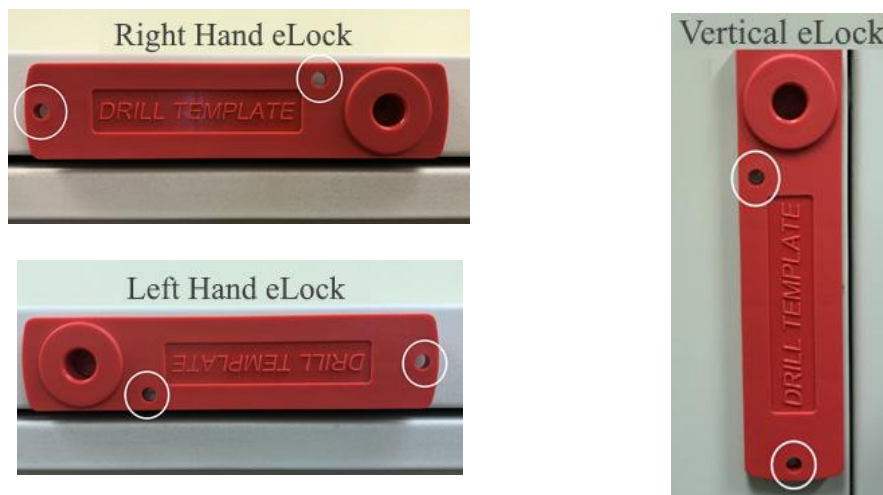


INSTALLATION PROCEDURE

1. Use change key to remove the core from your existing mechanical lock



2. Install drill template with extruded plug inserted into the mechanical lock. Drill two holes as indicated (drill size = 3/16"). Remove drill template once both holes are drilled.



eLock Installation Instruction

Surface Mount eLock

3. Adapter core installation:

- Insert installation key into the eLock adapter
- Insert adapter and installation key into the mechanical lock shell
- Rotate the key to lock position then remove it from the adapter.



4. Lock positioning:

- Position the lock as shown and then insert the knob shaft into the adapter.
- Secure the eLock using the provided screws (short screws for metal/longer screws for wood)



- ### 5. Final check:
- Press 1-2-3-4-√ (or any 4-digit for shared use) to lock and again to unlock, and then turn the knob to unlocked position.